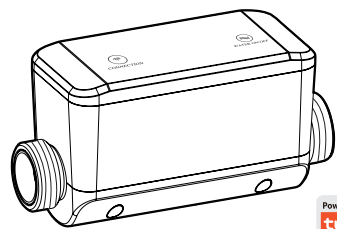


## WiFi Smart Water Valve

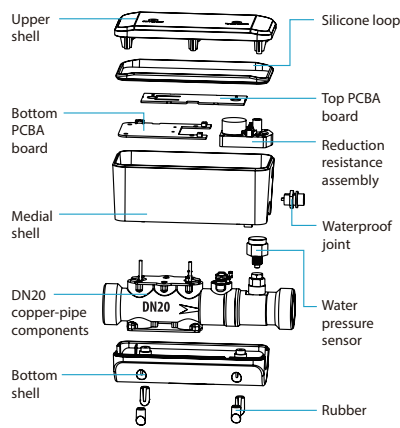
## USER MANUAL



Thanks for  
Choosing our WiFi Smart Home Sensors

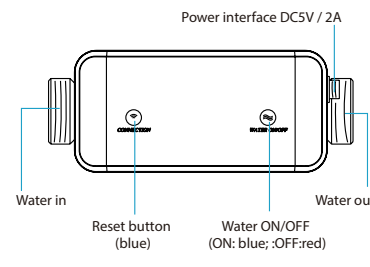
## Product Configuration

## 1.Product structure



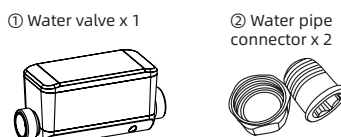
01

## 2.Appearance description

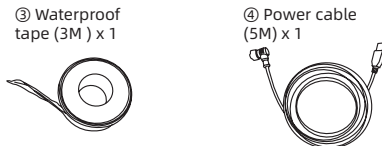


02

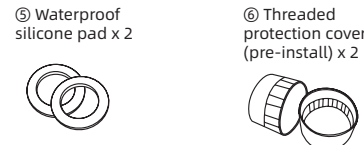
## 3.Packaging accessories



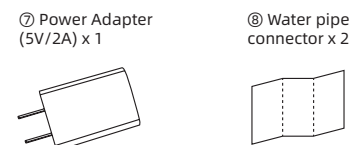
02



03



03



03

## Installation

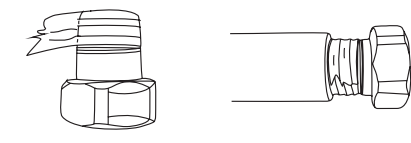
## 1.Water pipe installation

## &gt;&gt;&gt; Prepare tools

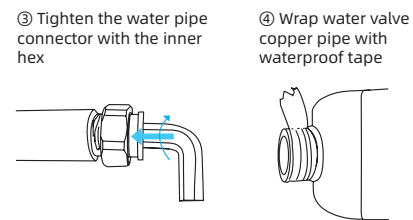


## &gt;&gt;&gt; Installation steps

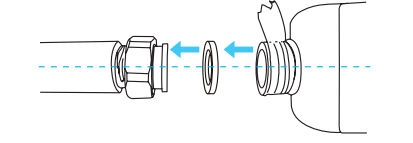
① Wrap the water pipe connector with waterproof tape



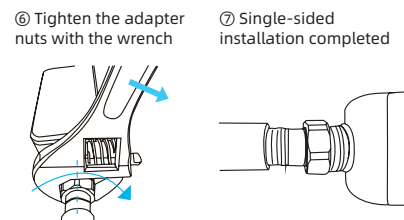
04



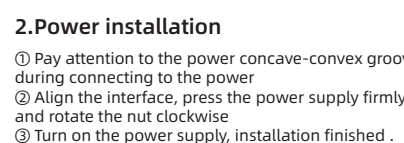
③ Put the silicone pad into the water pipe connector, and then dock the water valve copper pipe



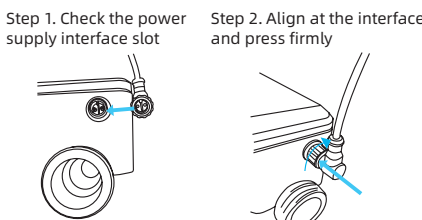
05



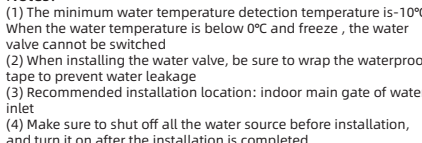
⑧ Install the other side of the water valve using the same method



06



Step 3. Turn the nut clockwise



07

Notes:  
(1) The minimum water temperature detection temperature is -10°C. When the water temperature is below 0°C and freeze , the water valve cannot be switched  
(2) When installing the water valve, be sure to wrap the waterproof tape to prevent water leakage  
(3) Recommended installation location: indoor main gate of water inlet  
(4) Make sure to shut off all the water source before installation, and turn it on after the installation is completed

## Specifications

Power supply: DC 5V / 2A  
Maximum working current: 800mA  
Standby power consumption: 0.3W  
Valve on / off time: 24 seconds  
Valve diameter: DN20 3/4 inch pipe  
Water temperature detection range: -10~65°C (14-149 °F)  
Water temperature detection accuracy: ± 0.5°C (0.9 °F)  
Water pressure range: 0~200 PSI  
Water pressure detection accuracy: ± 1KPa  
Accuracy of water flow detection: 0.1m³  
Wireless frequency: 2.4GHz  
Wireless standard: IEEE 802.11b/g/n  
Bluetooth version: Bluetooth 5.0  
Wi-Fi distance: 45M  
Spiral pitch: 14 NPS  
Waterproof level: IPX7  
Size: L19.5cmx D7.8cm x H10.17cm  
Operating temperature: 0 ~ 50°C (32-122 °F)  
Storage temperature: -10 ~ 65°C (14-149 °F)  
Storage humidity: 10 ~ 80%

08

## LED State

Device state	Indicator status
Bluetooth mode / Smart Wi-Fi / AP compatible mode	The indicator light flashes once every 2 seconds
Water valve switch status	Water valve switch indicator light is flashing (blue:on / red: off)
Reset	Press the reset button for 6s, the reset button indicator will flash slowly (device is waiting for configuration)

Tip: The device can be powered by the power bank .

09

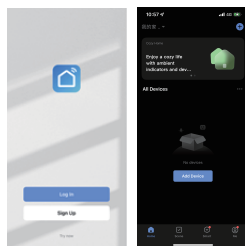
## Get Started

## Download APP

Download the "Smart life" app from APP Store or Google Play to your mobile.

Register and Login

1, Run "Smart life" application from your smartphone.  
2, Register and login



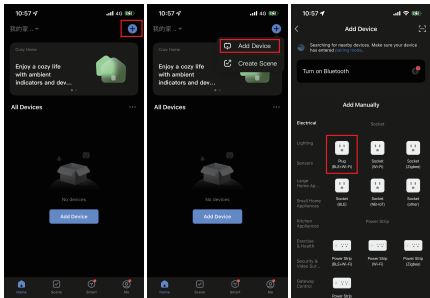
11

## Add Device

The default power on the device is standby mode (slow flash); if the indicator is not on, press the reset key for 6 seconds and then add the device

Notes:All Wi-Fi products can be added with any Wi-Fi device, and the device only supports the 2.4GHz Wi-Fi signal; this manual takes the wifi socket as an example to add.

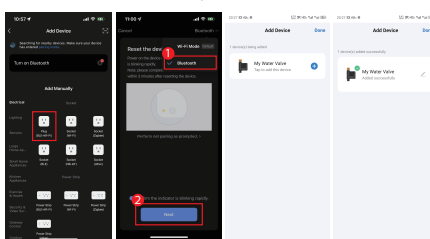
## 1,Select the right device type to configure



12

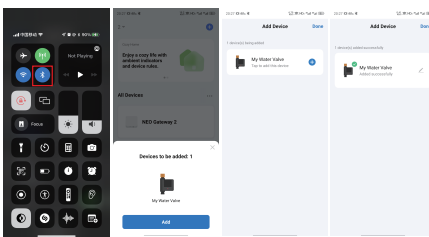
## 2. Add device via Bluetooth (this method is recommended)

Method 1: Active Bluetooth in Mobile phone to add the device through Bluetooth mode (the standby mode can be added with Bluetooth)



13

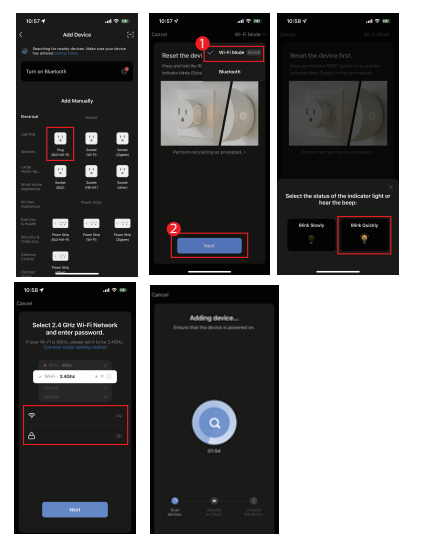
Method 2: After activating Bluetooth, enter the APP interface, the device will be automatically searched by Bluetooth, and then click Add



14

## 3. Add device via Wifi Mode

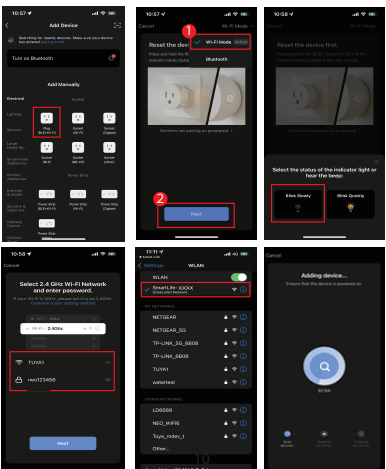
Press the reset button until the device flashes slowly (pending distribution mode), then add device(follow the APP prompts)



15

## 4. Add device via AP compatible mode

Press the reset button until the device flashes slowly (pending distribution mode), and then add (follow the APP prompts)

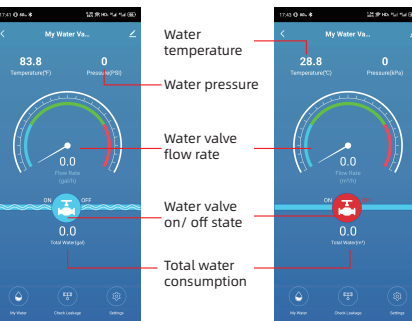


08

## Functions and Settings

Main functions, working status and record Settings

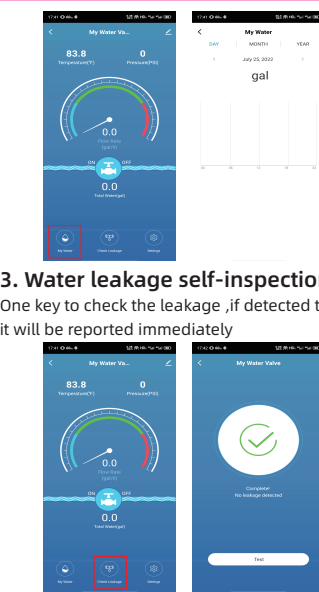
## 1. APP main interface



## 2. Water quantity record

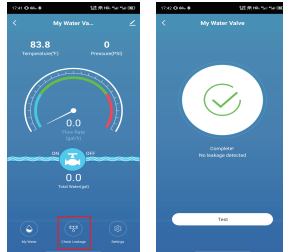
you can see the water usage in day, month and year

17



## 3. Water leakage self-inspection

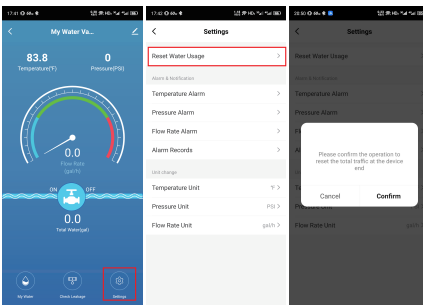
One key to check the leakage ,if detected the leakage , it will be reported immediately



## 4. Alarm/display settings

## (1) Water consumption reset switch

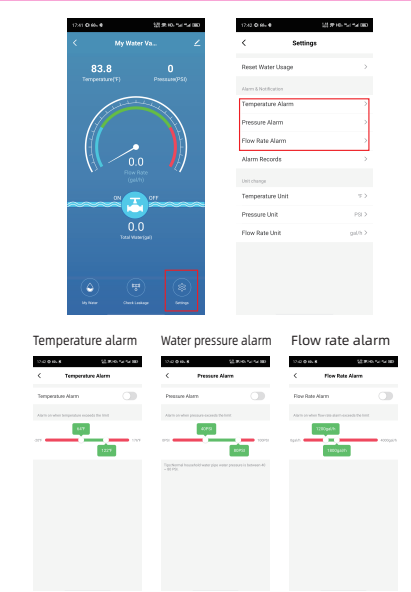
clear the total water consumption



## (2) Water temperature alarm, pressure alarm and flow rate alarm

The alarm switch can be turned on or off

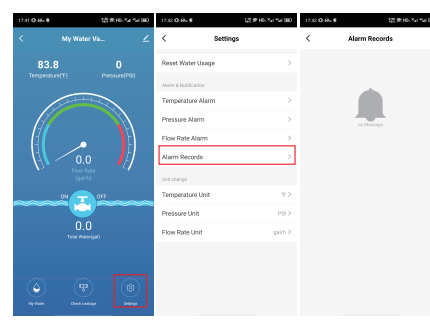
19



12

## (3) Alarm record

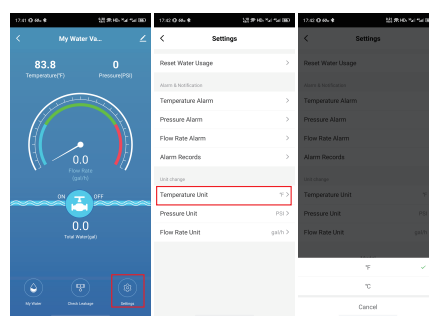
water temperature, pressure, water consumption and water leakage alarm



21

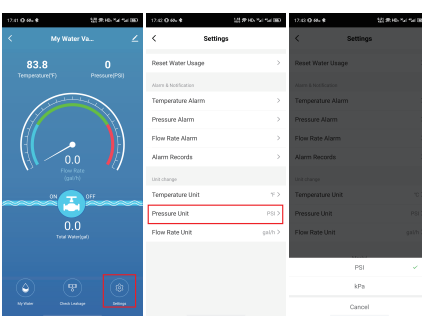
## 5. Setting the temperature, pressure and flow

## (1) Temperature unit settings ("°C" and "°F")



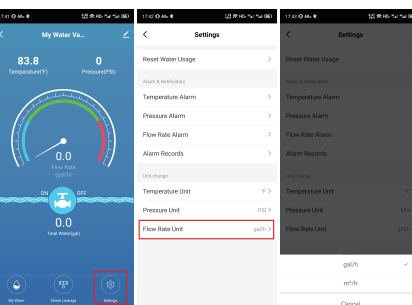
22

## (2) Pressure unit setting ("PSI" and "kPa")



23

## (3) Flow unit setting ("gal / h" and "m³ / h")

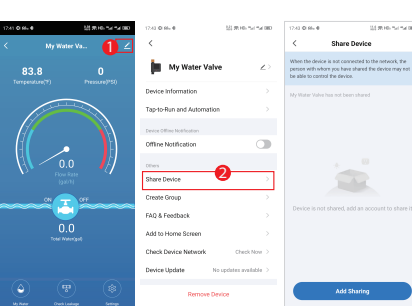


24

## Other Function

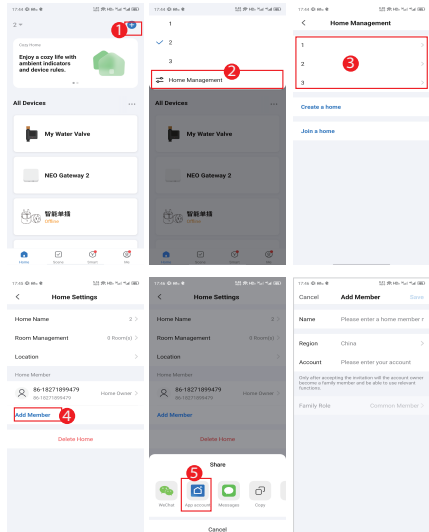
## 1. Share device

## (1) Single device sharing

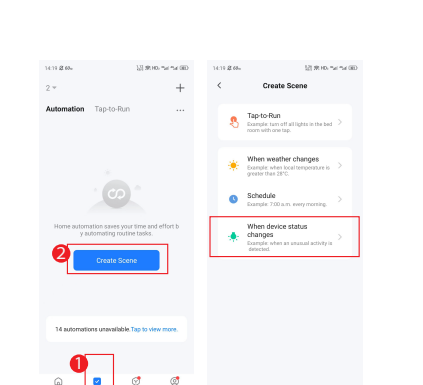


25

## (2) Family group sharing



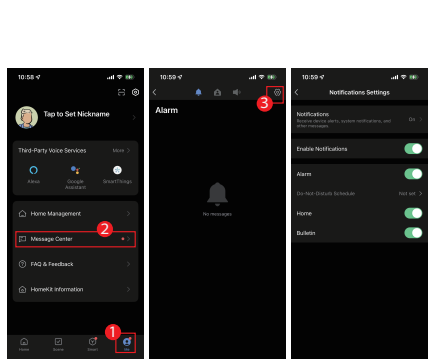
## 2. Product linkage



27

## 3. Push notification management

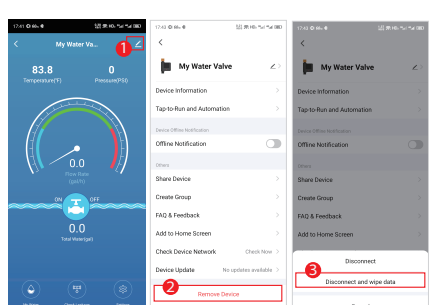
APP push notification:Turn off the switch, all devices in APP can not receive the push notification, but all alarm messages still can be checked in the message center



28

## 4. Clear the records

Support clearing the device history by deleting the device from app.



Due to the app update, the above interface is for reference only

29



Make Your Home Smarter